

TIME CONTROL  
DEEP WRINKLE EGF MASK

VISIBLY REVERSES THE SIGNS OF SKIN SLACKENING



VISIBLY REVERSES THE SIGNS OF SKIN SLACKENING

### HIGH-TECH ANTI-AGING

**TIME CONTROL Deep Wrinkles EGF Mask** draws its inspiration from redensifying EGF\* injections to combat deep wrinkles, devitalization, loss of elasticity, loss of volume and sagging facial contours.

EGFs are proteins that are naturally present in the skin and are able to boost cell growth capability and regeneration by initiating the synthesis of collagen, elastin and hyaluronic acid. With age, the concentration of EGFs in the body decreases and signs of aging appear: devitalized skin, deep wrinkles and slackening of tissues.

VIE Collection visibly reverses all signs of skin slackening with **TIME CONTROL Deep Wrinkles EGF Mask**. Immediately, skin is smoothed. In 1 month, skin recovers its elasticity\*\*.

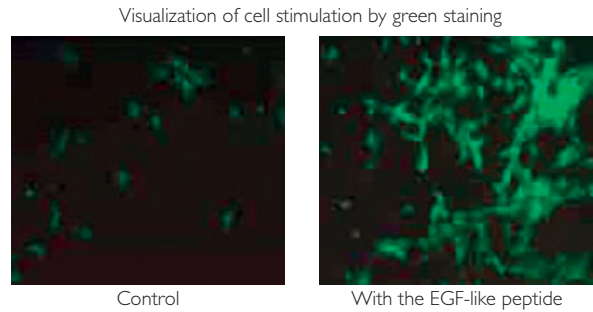
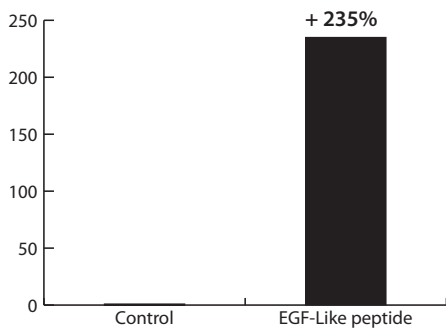
\*Epidermal Growth Factors.

\*\*Clinical test on 33 women, 2 applications per week.

### ADVANCED INGREDIENTS TO COMBAT ESTABLISHED SKIN AGING

#### PEPTIDE EGF-LIKE

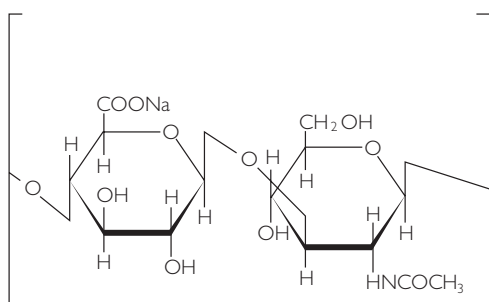
Obtained by chemical synthesis, the EGF-like peptide has the same molecular structure as the EGF. It acts in a biomimetic way to lure EGF receptors and activate cell division:



Cell multiplication: + 235%

The EGF-like peptide accelerates cutaneous regeneration and boosts the synthesis of collagen, elastin and hyaluronic acid.

#### HYALURONIC ACID DUO



Hyaluronic acid, a natural component of the extracellular matrix, has a key role in the structure and organization of the dermis. It helps maintain an optimum level of hydration by trapping water in the deeper layers, in the same way as a sponge. It also helps to strengthen skin cohesion and firmness.

Over time, the amount of hyaluronic acid contained in the body decreases by half. The skin becomes dehydrated, thinner and begins to slacken.

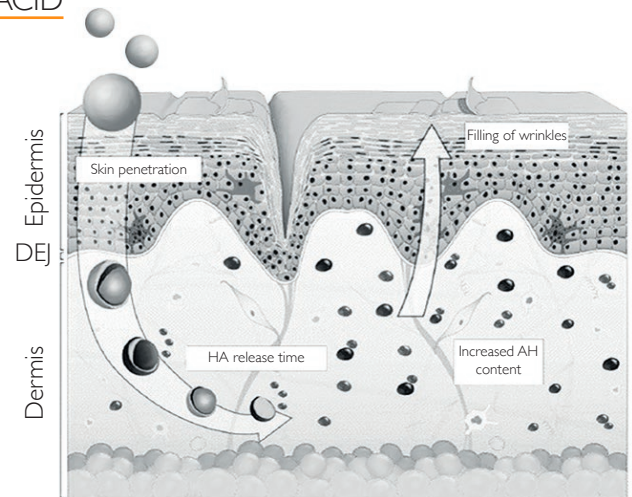
Hyaluronic acid is an essential ingredient in fighting against these signs of aging.

## ENCAPSULATED HIGH MOLECULAR WEIGHT HYALURONIC ACID

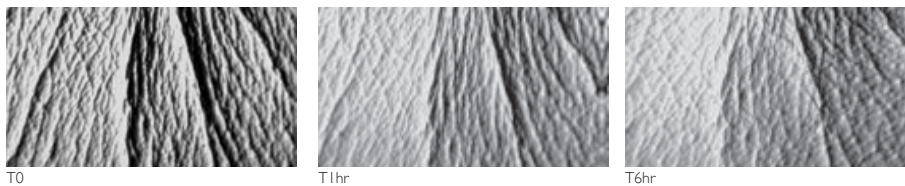
High molecular weight hyaluronic acid is encapsulated in spherulites, multilamellar microvesicles with an onion-like structure, and acts both in the epidermis and dermis.

The spherulites maximize skin penetration and enable the hyaluronic acid to reach the dermis. The different layers gradually open for controlled release of the ingredients and an extended effect.

The hyaluronic acid expands on contact with water in the dermis to volumized hollow areas.



After **1 hour**, wrinkles are smoothed\* :



\*In vivo test on the ingredient

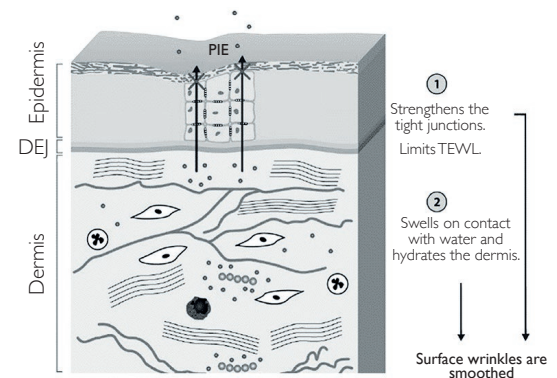
### RESULTS:

Deep wrinkles are filled and hollow areas are volumized.

## LOW MOLECULAR WEIGHT HYALURONIC ACID

This hyaluronic acid has a low molecular weight - between 15,000 and 50,000 Daltons - which enables it to act on very fine lines often related to lifestyle (smoking, sun and pollution) and dehydration.

These small molecules of hyaluronic acid penetrate the skin layers, swell on contact with water and accumulate to fill out fine lines. They also limit transepidermal water loss (TEWL) by strengthening the tight junctions. Low molecular weight hyaluronic acid thus improves the cohesion of the skin barrier.



### RESULTS:

Surface wrinkles are smoothed.

## CERAMIDES

Ceramides make up more than 40% of the skin's lipid matrix and act as an intercellular 'glue' to help hold cells together. After 30, our skin starts to dry out and dermic and epidermic skin cell structures begin to lose their cohesion. After 40, skin ceramide levels drop 40 to 60%. Vie Collection has developed a ceramide complex to combat this lipid breakdown.

The ceramide complex visibly improves the skin's corneocyte lipid envelope. By doing so, it restores the skin's barrier function to help skin return to its normal hydration levels and improves its protective shield.

## A PROVEN AND VISIBLE EFFICACY

### RESULTS: CLINICAL SCORING

Reduction of the DEPTH OF WRINKLES: -10%\*  
Skin is smoothed: 78% after 1 application\*\*

\*Clinical measurements under dermatologist supervision on 33 women who apply the product 2 times per week during 28 days.

\*\*Satisfaction test under dermatologist supervision on 33 women who apply the product 2 times per week during 28 days.

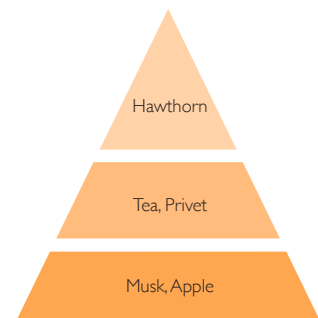
## A RICH FORMULA WITH TOTAL COMFORT

### ONCTUOUS CREAMY MASK

The rich cream envelops the skin in a dense, well-aerated mask. It feels thick when first daubed with the fingers but has a balm-like texture that goes on easily and leaves a delicate re-plumping film over the skin.

### SUBTLE FRAGRANCE

Subtle and feminine fragrance with flowery and slightly musky notes, softened by the freshness of tea



### REFERENCES

Retail size: 50ml tube - 700351  
Tester: 50ml tube - 700351  
Professional size: 150 ml tube - 700352  
Samples: 10 x tube 5 ml - 700353



### VIE COLLECTION

61, rue du Commandant L'Herminier 35400 SAINT MALO - FRANCE  
Tel : 02.23.18.31.31 - E-mail : [vierecollection@vierecollection.com](mailto:vierecollection@vierecollection.com)

[www.vierecollection.com](http://www.vierecollection.com)